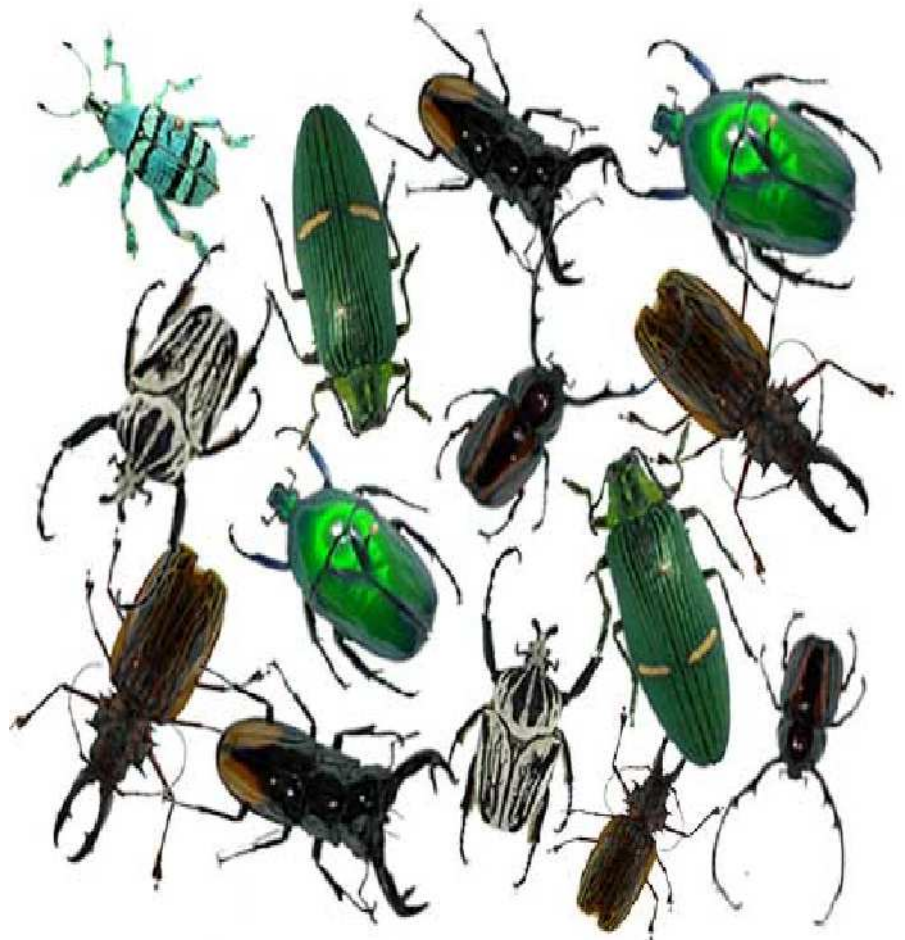


# Animal Facts:

# Beetles

[www.instantdisplay.co.uk](http://www.instantdisplay.co.uk)

At least 250,000 species of beetle have been identified. They live everywhere on Earth, apart from in the oceans.



[www.instantdisplay.co.uk](http://www.instantdisplay.co.uk)

Unlike other insects, adult beetles have a pair of thick, hard, front wings called elytra. These form an armour like casing over the beetle's body.



[www.instantdisplay.co.uk](http://www.instantdisplay.co.uk)

The goliath beetle of Africa is the heaviest flying insect, weighing over 100 grams and growing to as much as 13 cm long.



[www.instantdisplay.co.uk](http://www.instantdisplay.co.uk)

Dung beetles roll away the dung of grazing animals to lay their eggs on. Fresh dung from one elephant may contain 7,000 beetles - they will clear the dung away in little more than a day.



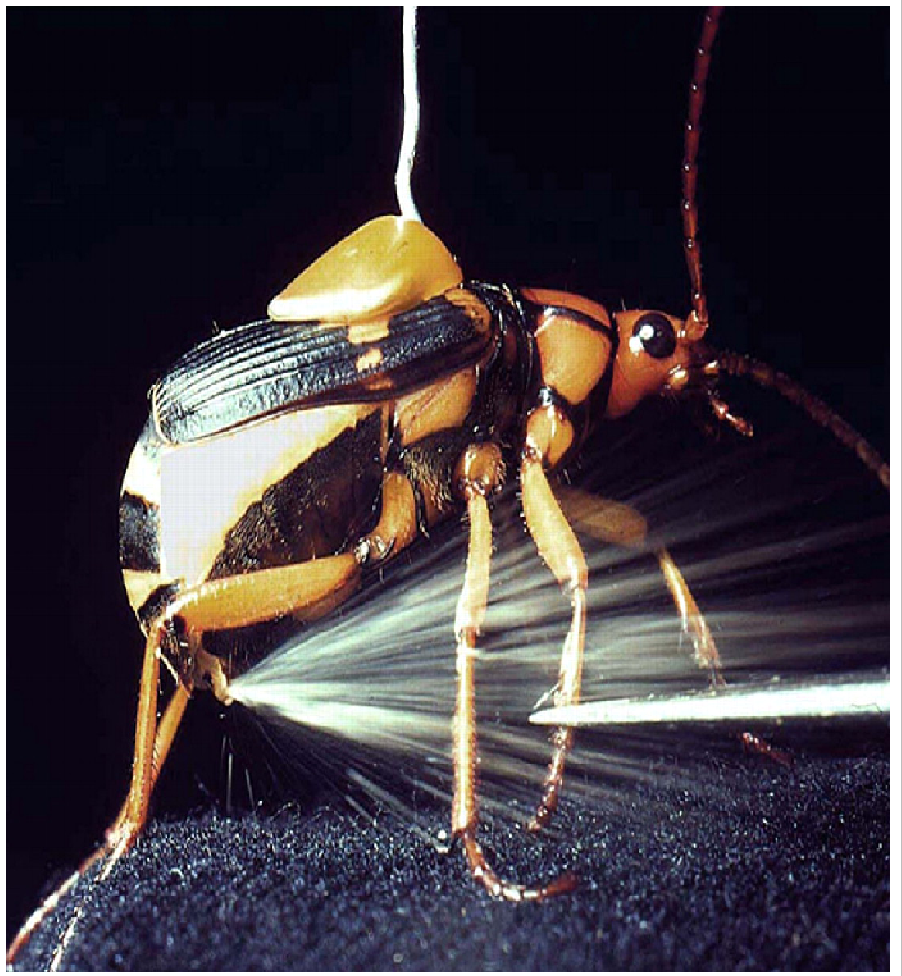
[www.instantdisplay.co.uk](http://www.instantdisplay.co.uk)

A click beetle can jump 30 cm into air.



[www.instantdisplay.co.uk](http://www.instantdisplay.co.uk)

The bombardier beetle shoots attackers with jets of burning chemicals from the tip of its abdomen.



[www.instantdisplay.co.uk](http://www.instantdisplay.co.uk)

The rove beetle can zoom across water on a liquid given off by glands on its abdomen.



[www.instantdisplay.co.uk](http://www.instantdisplay.co.uk)

The leaf eating beetle can clamp on to leaves using the suction of a layer of oil.



Stag beetles have huge jaws which look like a stag's antlers.



The Arctic  
beetle can  
survive in  
temperatures  
below  $-60^{\circ}\text{C}$

