

Animal Facts:

Bees and Wasps

www.instantdisplay.co.uk

Bees and wasps are narrow waisted insects (usually with hairy bodies). Many suck nectar from flowers.

Bumblebee



Wasp

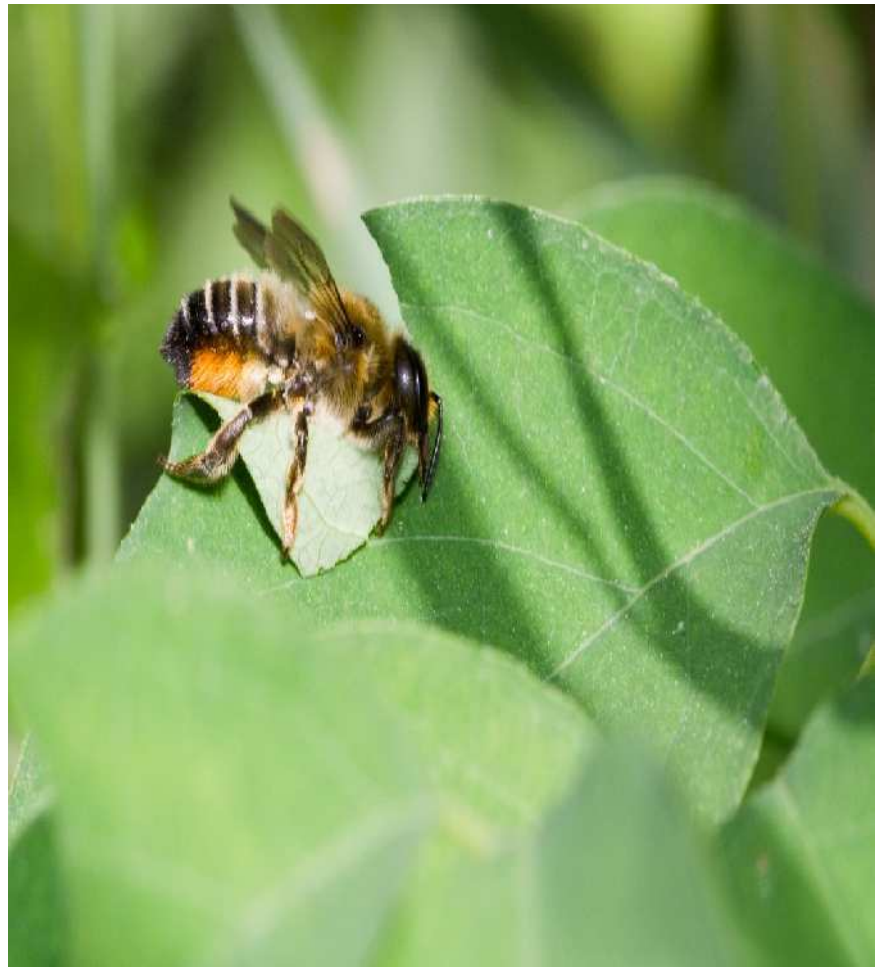


Honey bee

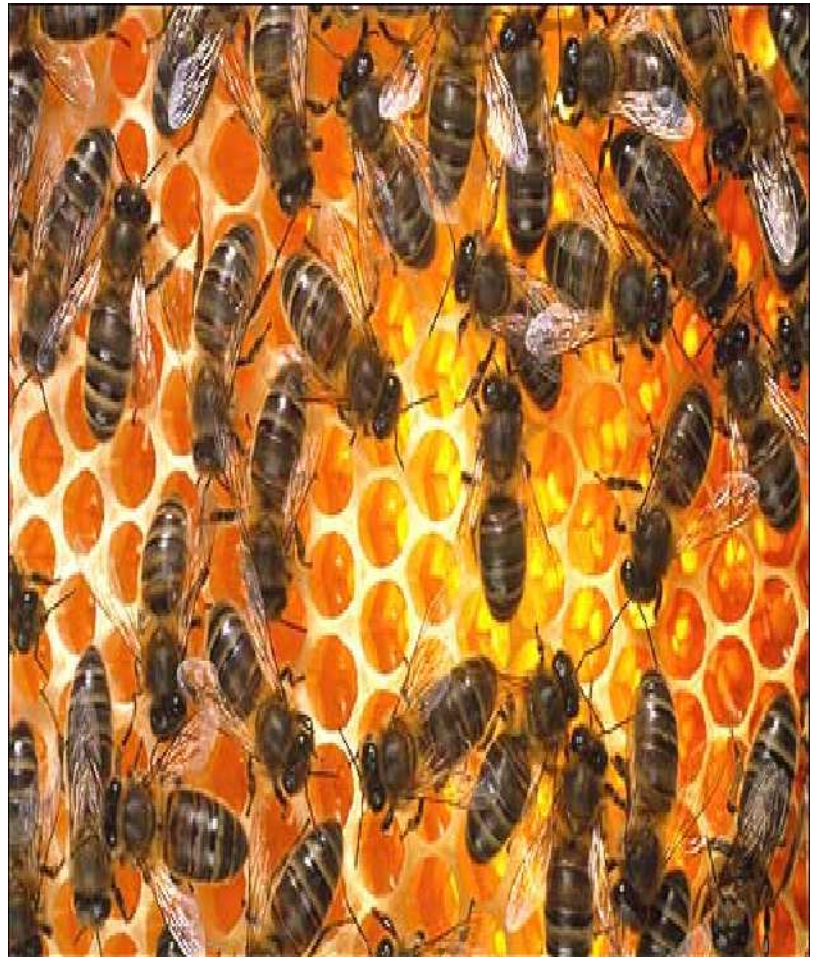


www.instantdisplay.co.uk

There are 22,000 species of bee. Some, like leaf cutter bees, live alone. But most, like honey bees and bumble bees, live in vast colonies.



Honey bees live in hives, either in hollow trees or in man made beehive boxes. The inside of the hive is a honeycomb made up of hundreds of six sided cells.



A honey bee colony has a queen (the female bee that lays the eggs), tens of thousands of female worker bees, and a few hundred male drones.



www.instantdisplay.co.uk

Worker bees collect nectar and pollen from flowers.



www.instantdisplay.co.uk

Each worker bee makes ten trips a day and visits 1,000 flowers each trip. It takes 65,000 trips to 65 million flowers to make 1 kg of honey.



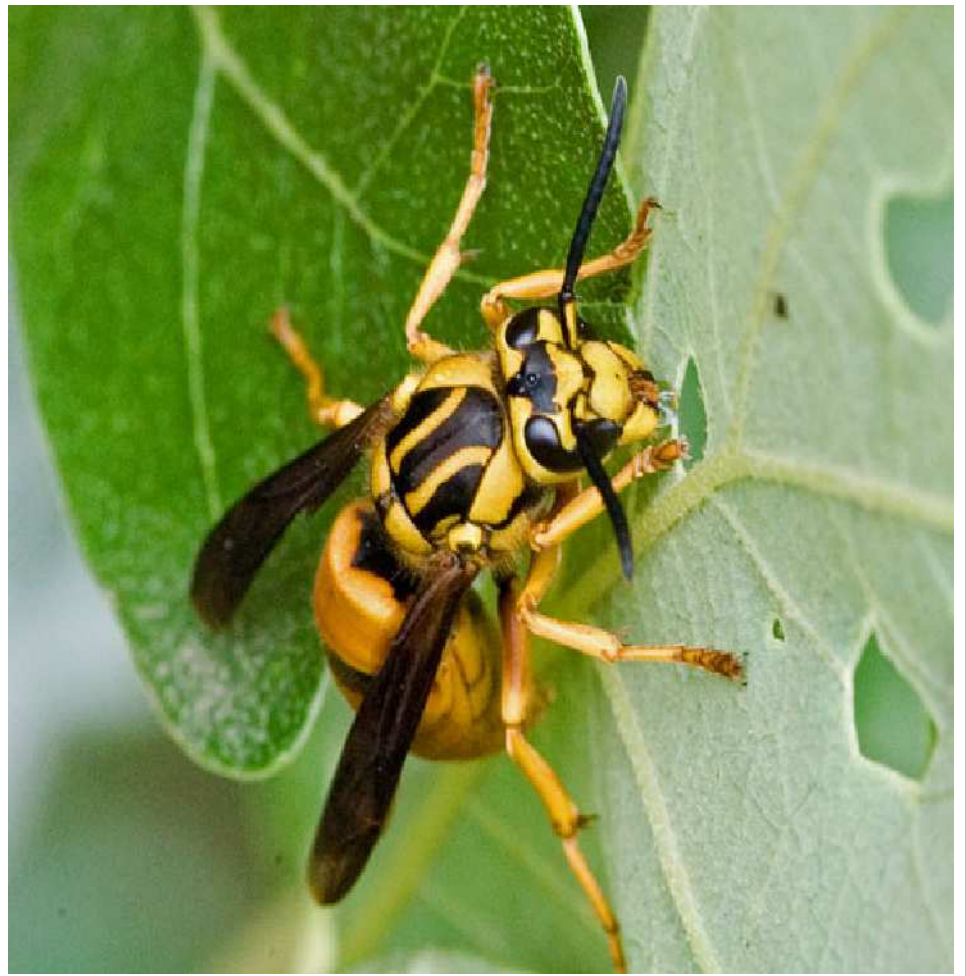
www.instantdisplay.co.uk

Honey bees tell others where to find flowers, rich in pollen or nectar, by flying in a dance like pattern.



www.instantdisplay.co.uk

Wasps do not make honey, but feed on nectar and fruit juice. Many species have a nasty sting in their tail.



www.instantdisplay.co.uk

Paper wasps build huge papier mache nests the size of footballs, containing 15,000 or more cells.



www.instantdisplay.co.uk

Paper wasps
make papier
mache for
their nest by
chewing
wood and
mixing it with
their spit.

