

Landforms and Bodies of Water



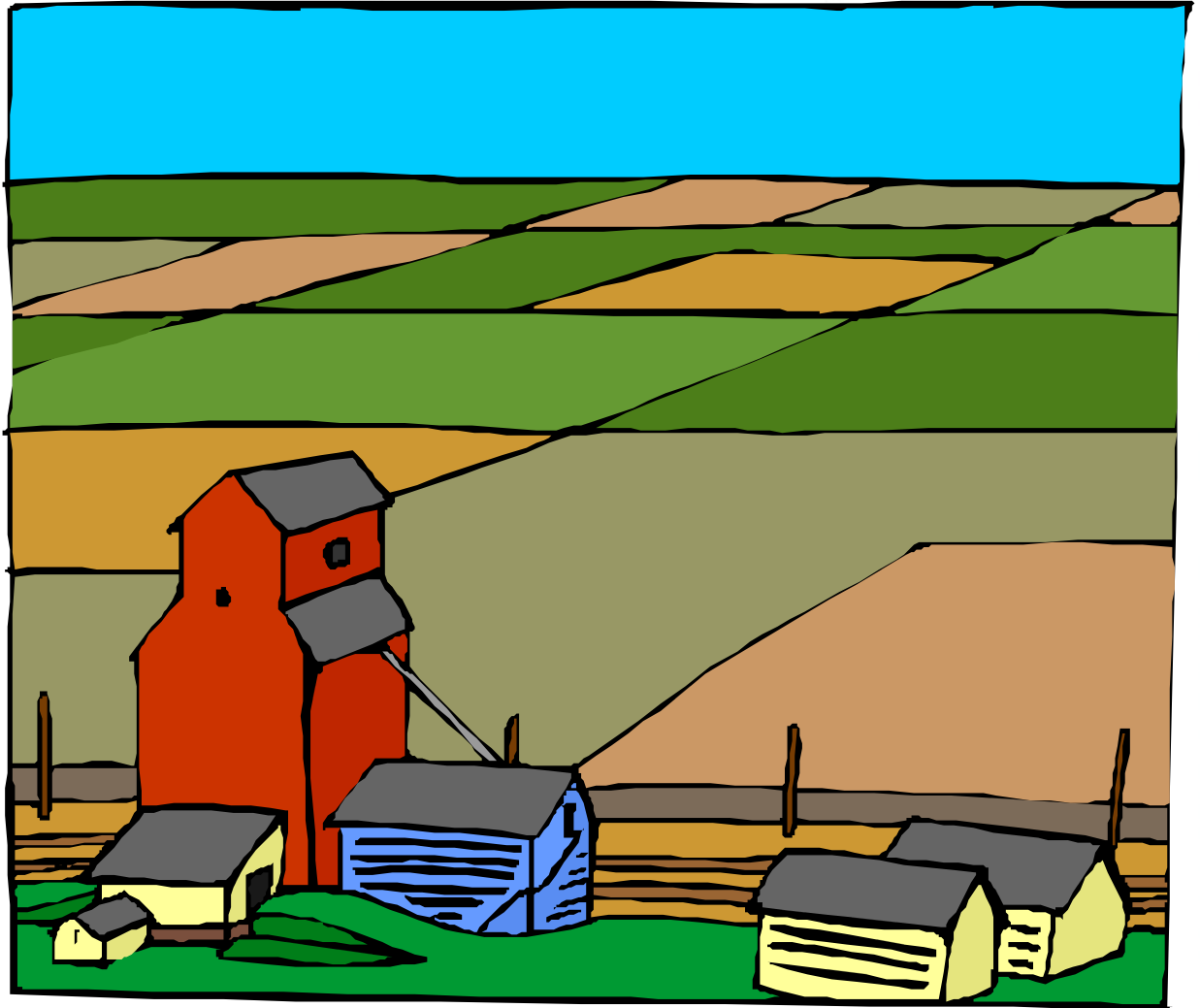
hill



A hill is a
small
raised area
of land.

plain

Plains are
large flat
areas of
land.



mountain



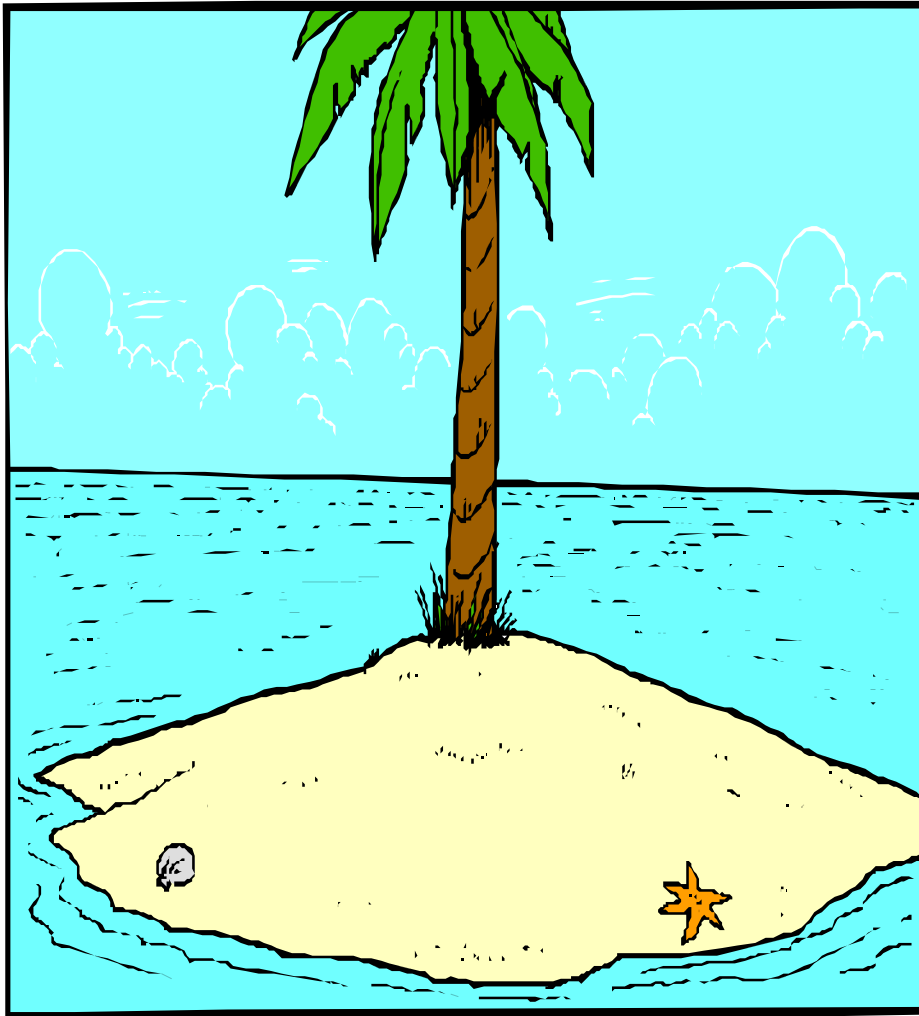
A mountain is
a very high
piece of land.
Much higher
than a hill.

valley



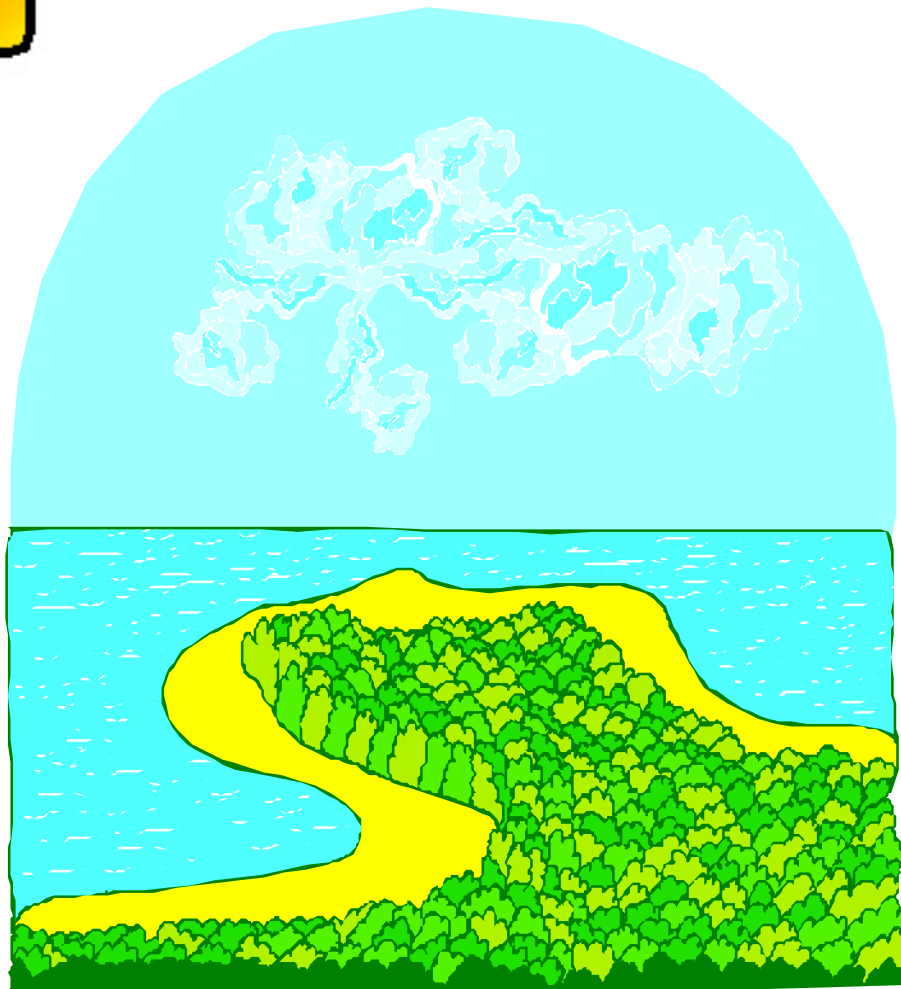
A valley is
the low land
between
mountains.

island



An island is a piece of land that is surrounded by water.

peninsula



A peninsula is
a piece of
land that has
water on
three sides.

lake



A lake is a big
body of water
that is
surrounded by
land.

river



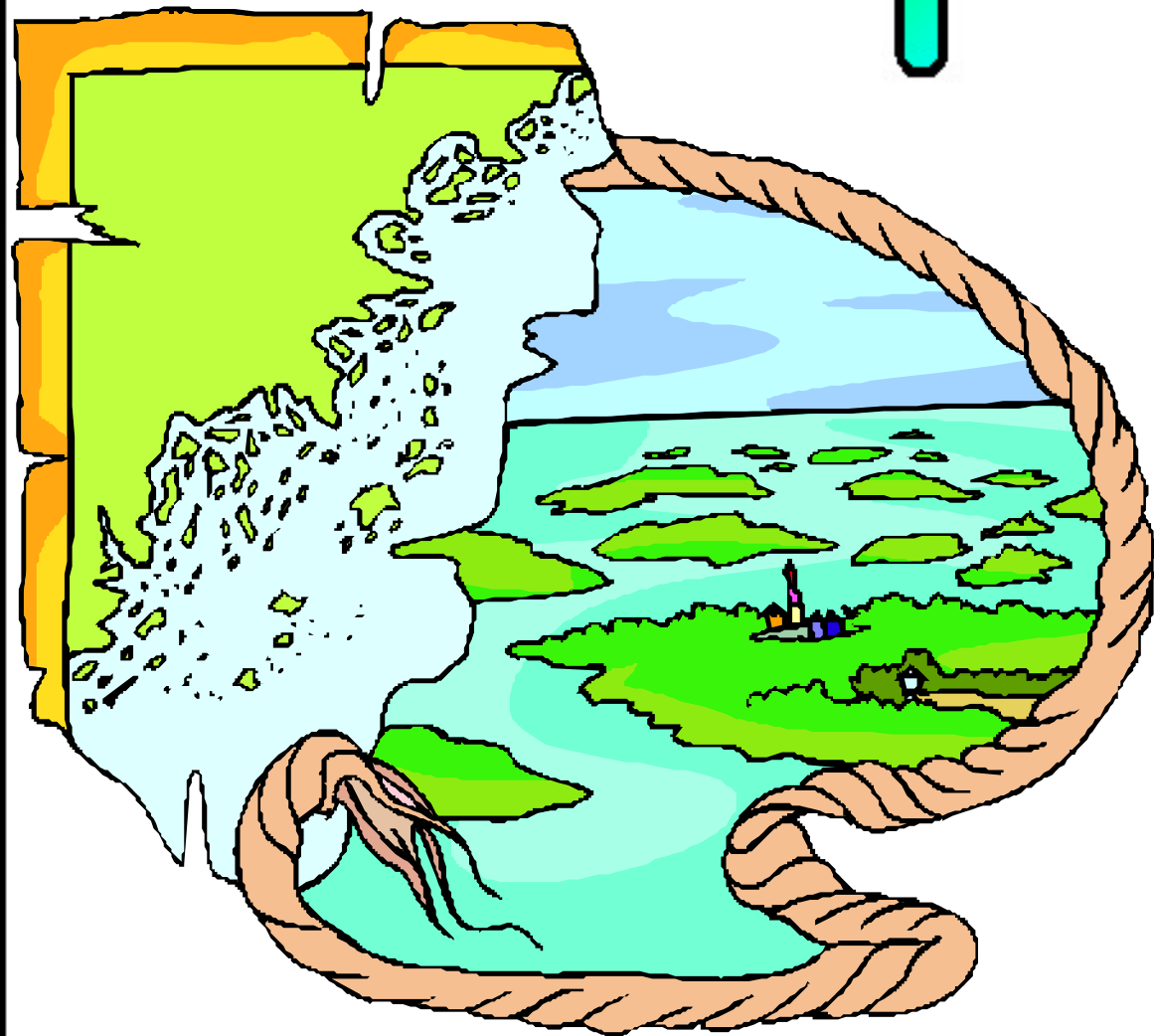
A river is a large, flowing body of water. Rivers usually go to the sea or ocean.

gulf

A gulf is a part of the sea or ocean which is partly surrounded by land. It is usually larger than a bay.



archipelago



An
archipelago
is a group
or chain of
islands.

atoll



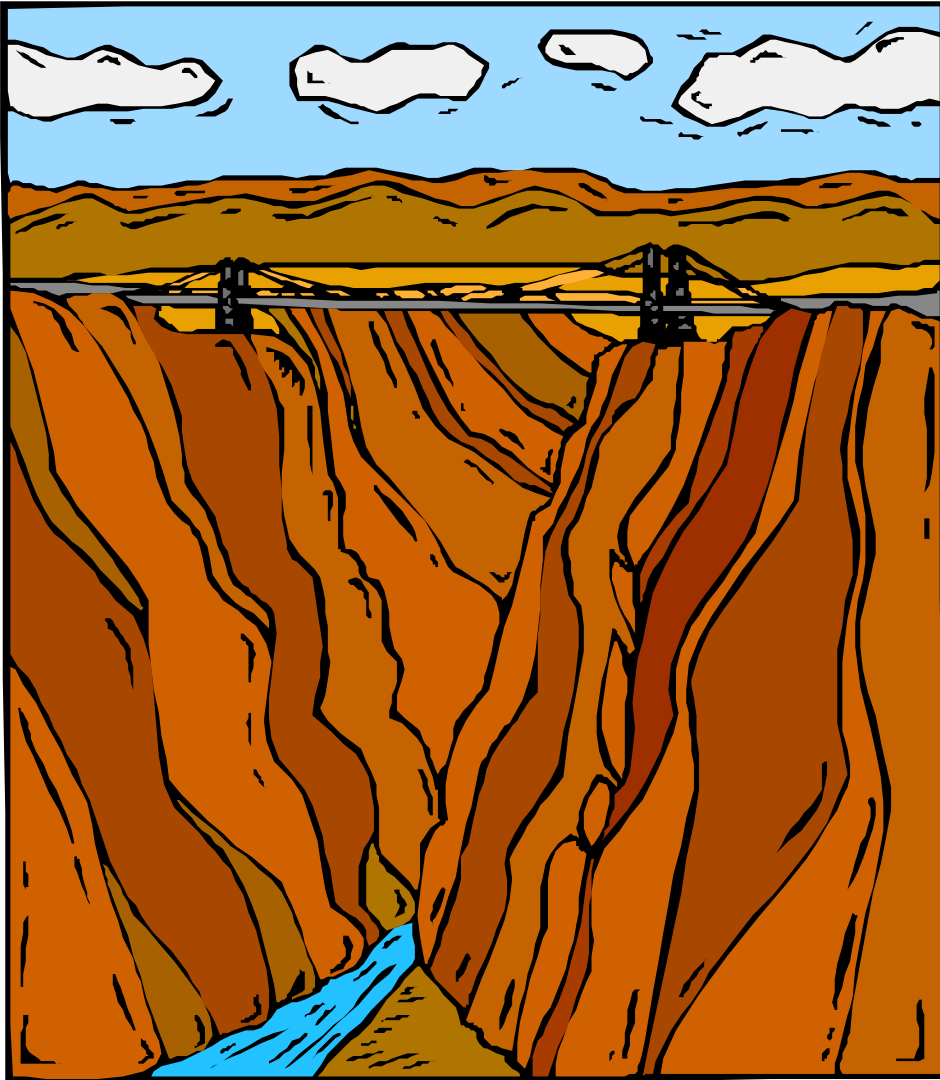
An atoll is a ring, or part of a ring, of coral which forms an island in the ocean.

bay



A bay is a body of water which is partly enclosed by land.

canyon



A canyon is a
deep valley
with very
steep sides.

cape



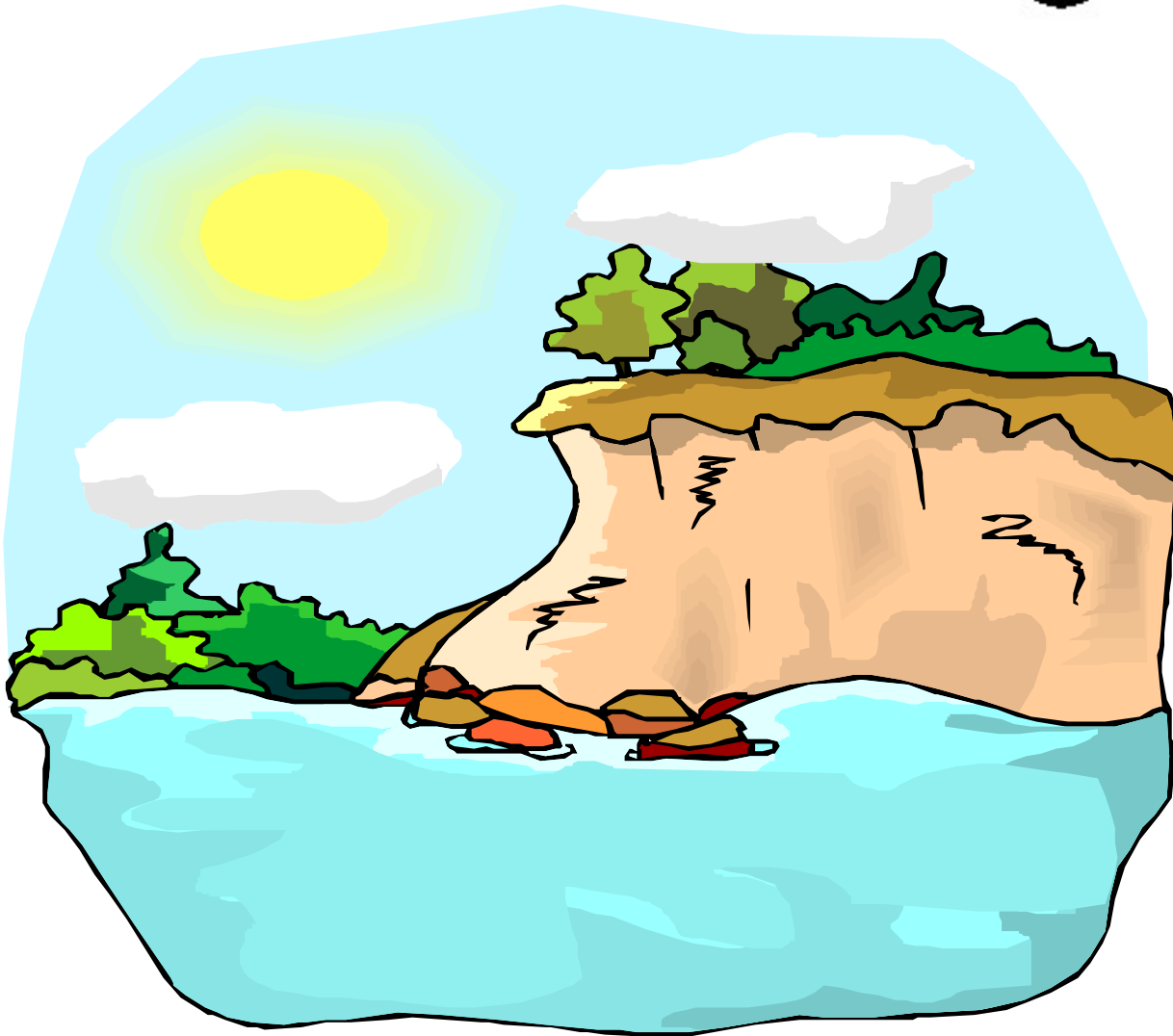
A cape is a pointed piece of land that sticks out into a sea, ocean, lake or river.

cave



A cave is a
hole in the
ground or in
the side of a
hill or
mountain.

cliff



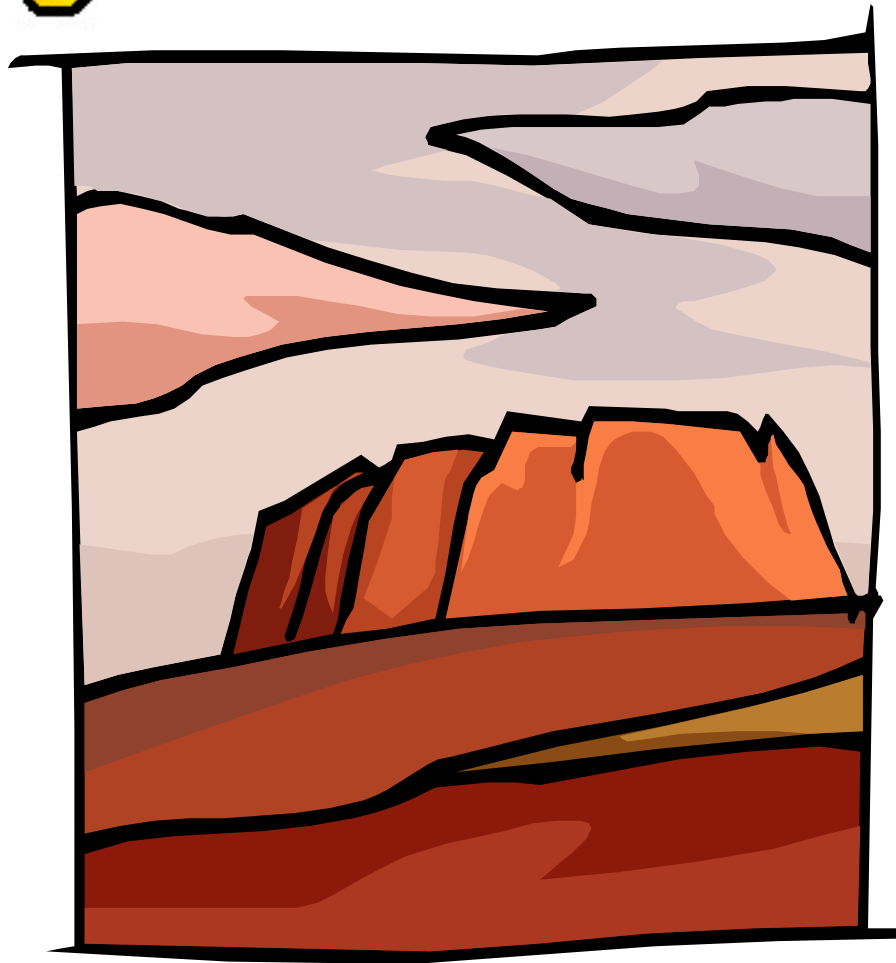
A cliff is
a steep
face of
rock and
soil.

estuary



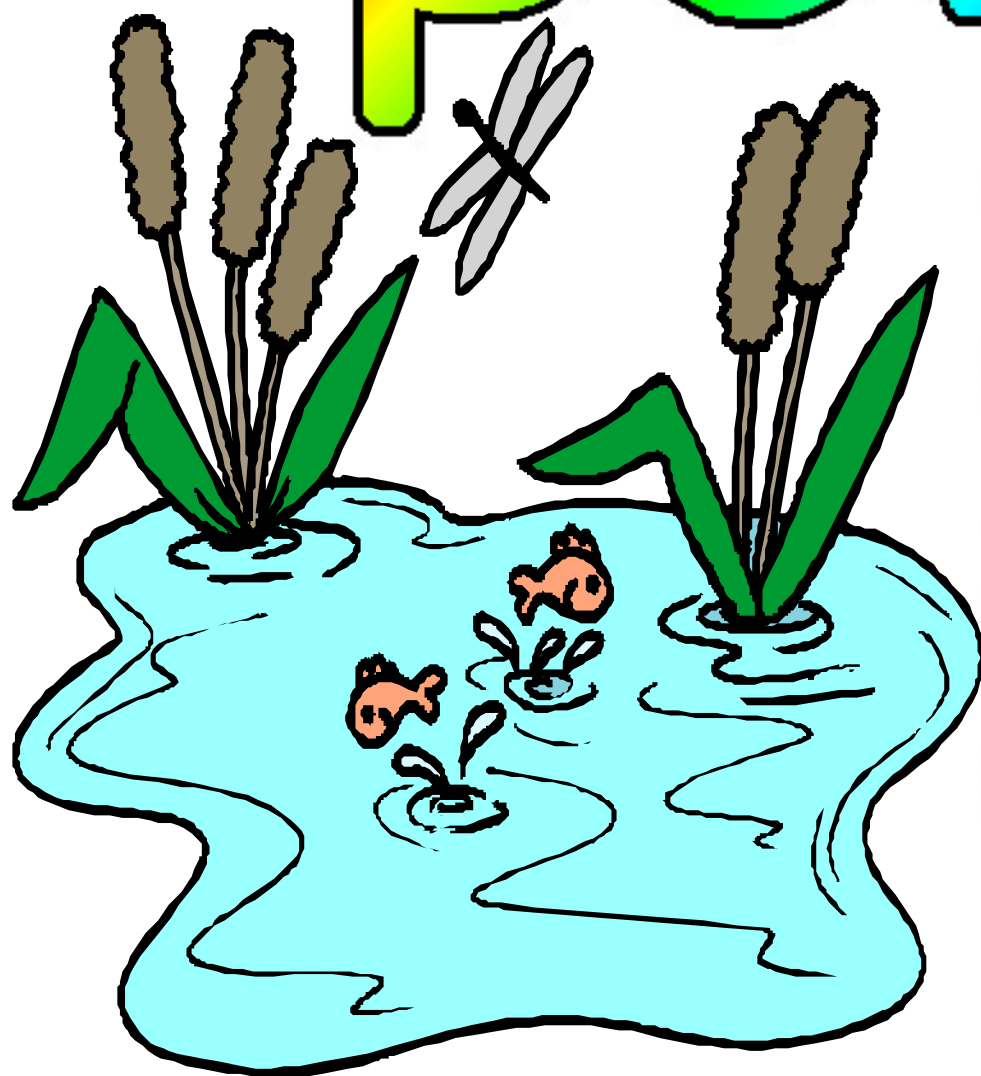
An estuary is where a river meets the sea or ocean.

plateau



A plateau is a large flat area of land that is higher than the surrounding area.

pond



A pond is a
small body of
water that is
surrounded by
land.